

Making hearing a priority



Delivering GLP-compliant preclinical services to support your auditory research program

- **CBSET**, a state-of-the-art GLP-compliant translational research institute
- **Cilcare**, a leading biotech specializing in **auditory science**
- **Offering cutting-edge preclinical services and regulatory support** for the assessment of your products for auditory indications.

Why partner with us?

- Extensive expertise in **otology** research
- Fully **customizable** and **comprehensive** services
- **Synergistic experience** in the development of device-mediated therapies, small molecules, biologics and therapeutic proteins, cell products, and **gene therapies**
- Cutting-edge research facilities in a **GLP-compliant** environment
- **High-throughput auditory measures** and **histology** assessment on **small and large** species

Cochlear implants



Drugs with potential ototoxicity Targeting ear disorders



Cell & Gene Therapies



Physician Training



Inner Ear Imaging Equipment



Comprehensive preclinical support from POC to GLP-compliant safety assessment

- ▶ **GLP Ototoxicity studies / GLP Toxicology & Toxicokinetics**
 - ▶ Auditory **Tolerance & Safety** studies
 - ▶ Auditory **Efficacy** studies
 - ▶ **PK & Distribution**

Small & large species • Method development • TPP & regulatory consulting



IND
Application

AUDITORY ASSESSMENT EXPERTISE

Non-invasive, translational functional measures

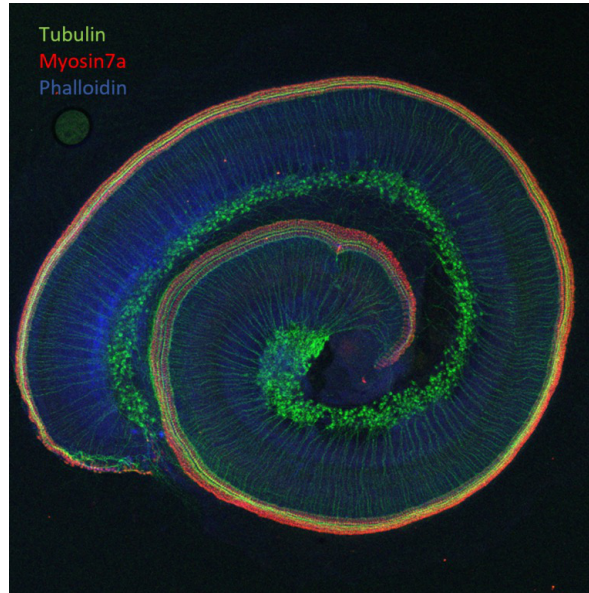
Electrophysiology & electroacoustic

- ABR
- DPOAE
- Wave I to V analysis

Otосcopy

Tympanometry

CT Scan



Immunohistochemistry & histopathology

Flat surface & cross section preparation of the inner ear

Histology

Staining of:

- Hair Cells
- Supporting Cells
- Auditory Fibers
- Stereocilia
- Ribbon Synapses
- Spiral Ganglion Neurons

Fluorescence monitoring

Surgical procedures

Middle ear delivery

- Transtympanic
- Round window niche
- Intrabullar

Intracochlear

- Cochleostomy
- Canalostomy

Cochlear implantation

Other surgery

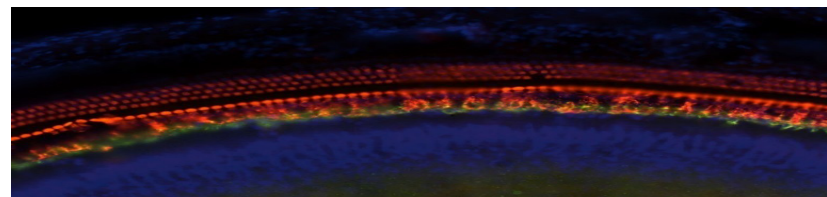
- Tympanoplasty
- Tympanostomy tube insertion
- Myringotomy

Specific samplings

- Inner ear fluid
- Tympanic bulla
- Cerebrospinal fluid

Cochlear explants

- Ototoxicity & excitotoxicity models



About CBSET

CBSET is a state-of-the-art translational research institute providing high-quality collaborative GLP studies from proof-of-concept through regulatory filings and IND-enabling studies:

- Full preclinical programs, plus specific study design supporting a range of applications in therapeutic and device development
- OLAW-assured, AAALAC-accredited animal research Facilities

CBSET is based in Lexington (near Boston) and Grafton, MA (USA).

info@cbset.com



cbset.com

About Cilcare

Cilcare is a biotech dedicated to harnessing auditory sciences to reshape the future of care via early diagnosis and targeted treatment.

Cilcare External Innovation supports its partners in the health and life-sciences sector in the development of new therapies to prevent and treat auditory-related diseases including inherited hearing loss, synaptopathy, ototoxicity, sensorineural hearing loss, and tinnitus.

Cilcare is based in Montpellier and Paris (France), and Lexington (near Boston), MA (USA).

info@cilcare.com



cilcare.com