

## SYMPATHETIC DENERVATION

### Pioneering Expertise in Cardiovascular Research

The last decade has witnessed intense research into minimally invasive sympathetic denervation therapies — from catheter-based drug delivery systems to sonic and RF ablation devices — to treat chronic diseases such as systemic hypertension, metabolic syndrome, sleep apnea, heart failure, liver cirrhosis and rheumatoid arthritis.

Since the inception of this technology, CBSET has led the way in developing animal models for assessing safety, as well as quantitative methods for assessing and understanding efficacy, including biomarker assays, histomorphometry, and even computational modeling. These have been presented in international conferences and published in peer-reviewed journals, cementing CBSET's status as a key opinion leader in the evaluation of neuroablation technologies.

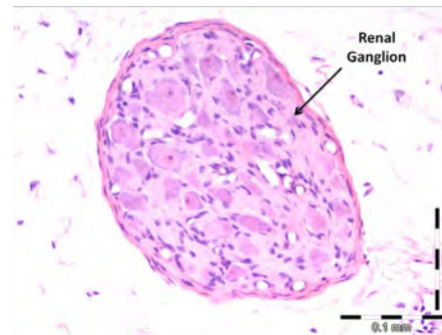
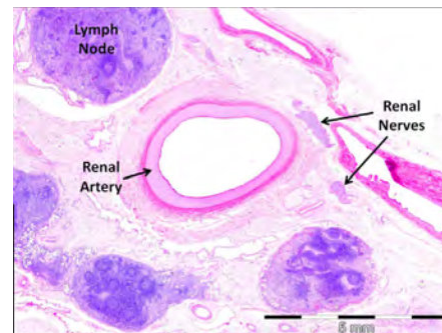
CBSET has developed specialized expertise in the development and application of minimally invasive device-based interventional therapies for renal denervation.

#### Catheter-based Ablation

- Programmed electrical stimulation (PES) or cryoballoons are used to target specific cells of the heart that are the source of irregular electrical pulses, which cause atrial fibrillation (AF).
- Denervation therapies (RDN) selectively ablate sympathetic nerves of the kidney to modulate hypertension.

#### Comprehensive Tissue Assessment

- Localized drug delivery
- Histopathology, IHC, immunofluorescence
- Biomarker, morphometry and quantitative analysis
- Computational (3-D) modeling



## ABOUT CBSET

CBSET is a state-of-the-art translational research institute located in the greater Boston area of MA.

Our mission is to advance biomedical research, through innovative, high-quality services. We combine top-tier research with operational expertise. Since our inception, CBSET has continued to develop technical and scientific acumen through collaborative projects in the medical device, pharmaceutical and academic communities.

Our 40,000 square foot, GLP-compliant, AAALAC- accredited facility includes vivaria, procedure rooms, catheterization / imaging labs, surgical and necropsy suites, histopathology, SEM, and a range of other technologies.

## Why CBSET?

- **Credibility.** We are recognized as unbiased experts, bringing independent credibility to your regulatory filings.
- **Culture.** Our culture is based in science; we value new models and creative collaboration.
- **Mission.** Our motivation is to enable your success; your product is our mission.
- **Integrated resource.** Our multidisciplinary team includes board-certified veterinary, quality, biological and quantitative sciences expertise, as well as board-certified pathologists – all in one facility.

## CBSET, Inc.

500 Shire Way, Lexington, MA 02421

and

9 Yorkshire Lane, Grafton, MA 01536

+1 781 541 5555

info@cbset.com



CBSET.COM



## Regulatory Review with a Credible Partner

CBSET is an ideal partner in preparing, presenting, and defending your GLP studies for regulatory review. Our status as a non-profit, 501(c)(3) institute and long track record of safety assessments gives collaborations impeccable credibility..

- Audited GLP-compliant large animal facilities (USDA, FDA)
- Operational compliance and animal welfare accreditation - GLP, OLAW, AAALAC
- Animal sciences – 2 full-time ACLAM-certified DVM
- Experts in safety assessment – 2 full-time boarded veterinary pathologists (DACVP)

## Research Spotlight: Cardiovascular Research Resources

