



EVALUATION OF MESH IMPLANTS AND RELATED DEVICES

Preclinical Evaluation of Mesh Implants

Prosthetic patches, meshes or plugs made from synthetic or biologically-derived materials are often used in the repair procedure for surgical or laparoscopic approaches in a variety of locations, including breast reconstruction, abdominal/pelvic hernia repair, and hiatal hernia repair.

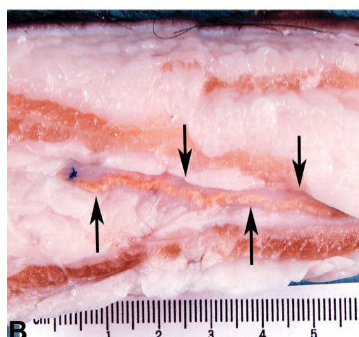
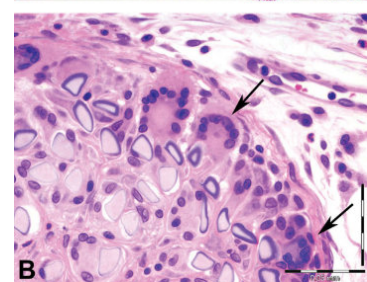
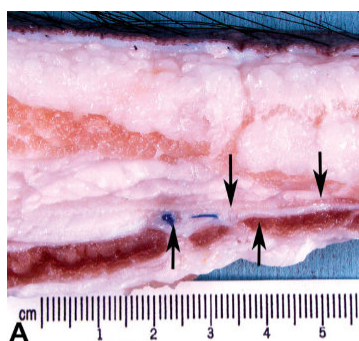
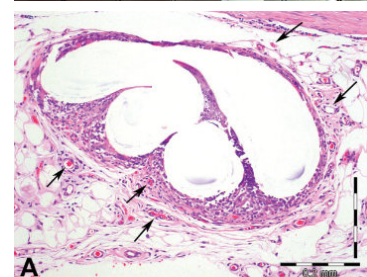
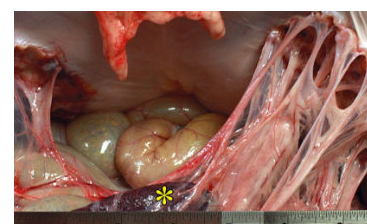
Repairs can be done either by open procedure or laparoscopically; the minimally-invasive approach is gaining popularity due to quicker recovery times, decreased pain and decreased risk of infection. Further advances in these repair procedures include the incorporation of anti-infective agents into the devices and the use of bioresorbable materials.

Evaluating Safety and Efficacy

CBSET has experience evaluating the safety and efficacy of mesh implants and related repair technologies, including:

- Patches and meshes
- Plugs
- Suture or staple fixation
- Adhesive / glue fixation
- Wound drains

In addition to evaluating device safety and efficacy, CBSET also has experience in more advanced evaluation of these technologies, including characterizing novel materials, biomechanical testing of fixation strength, and determining biodistribution of novel pharmacologic coatings.



ABOUT CBSET

CBSET is a state-of-the-art translational research institute located in the greater Boston area of MA.

Our mission is to advance biomedical research, through innovative, high-quality services. We combine top-tier research with operational expertise. Since our inception, CBSET has continued to develop technical and scientific acumen through collaborative projects in the medical device, pharmaceutical and academic communities.

Our 40,000 square foot, GLP-compliant, AAALAC- accredited facility includes vivaria, procedure rooms, catheterization / imaging labs, surgical and necropsy suites, histopathology, SEM, and a range of other technologies.

Why CBSET?

- **Credibility.** We are recognized as unbiased experts, bringing independent credibility to your regulatory filings.
- **Culture.** Our culture is based in science; we value new models and creative collaboration.
- **Mission.** Our motivation is to enable your success; your product is our mission.
- **Integrated resource.** Our multidisciplinary team includes board-certified veterinary, quality, biological and quantitative sciences expertise, as well as board-certified pathologists – all in one facility.

CBSET, Inc.

500 Shire Way, Lexington, MA 02421

and

9 Yorkshire Lane, Grafton, MA 01536

+1 781 541 5555

info@cbset.com



CBSET.COM



State-of-the-art Equipment

CBSET is equipped with an Olympus EVIS EXERA II laparoendoscopic tower, including: VISERA PRO HD camera head, CO2 insufflation unit, 0° and 30° laparoscopes, dual-channel gastroscope, high-definition monitor, narrow band imaging technology and DVD/USB recording capabilities.

Uniquely Skilled Staff

Our uniquely skilled surgical and technical staff has extensive experience with hernia repair model in small and large animals, including rat, rabbit, mini-pig or Yorkshire swine. In addition, CBSET's board-certified veterinary pathologists can evaluate and characterize tissue damage, repair, or response to implanted devices using histology.

